



# **Request for Proposals for Fiber Infrastructure Installation**

**Hopkinsville Electric System/energynet  
City-Wide Fiber Completion Project**

## Request for Proposals (RFP) for Fiber Installation Labor

Hopkinsville Electric System/energynet (HES), located in Hopkinsville, Kentucky, is issuing a Request for Proposals seeking a Kentucky-registered contracting firm to provide Fiber Plant Installation in Hopkinsville, Kentucky.

The successful bidder will be providing crews to perform aerial and underground installation of fiber backbone and fiber infrastructure cable and associated hardware in the HES energynet electric service area.

HES energynet began installation of fiber in Hopkinsville in 1998. In 2018 we began a more extensive fiber installation in Hopkinsville to serve residents of the City of Hopkinsville with FTTH services.

We are now preparing to complete our Fiber Installation in Hopkinsville. We have fiber designs prepared and ready, we will manage the project internally in coordination with a crew supervisor provided by the winning contractor.

The following outlines this request for qualifications:

1. Scope of Work: HES energynet is seeking an experienced fiber installation contractor to install the following:
  - a. Installation Estimates
    - i. @71 Miles of aerial fiber
    - ii. @2 Miles of underground fiber
    - iii. 296 Splice Enclosures
    - iv. 100 Peds / Vaults
    - v. 1718 Fiber NAPs
    - vi. All associated hardware required for the above
  - b. Bill of Materials
    - i. Please see Attachment A
  - c. Desired Project Timeline
    - i. Please see Attachment B for desired project timeline
  - d. Design Drawings
    - i. Please see Attachment C for example map, you can also visit the following for the full plans:
      1. <https://share.vetro.io/view/BPm6CHYFHGO-24O69VC7g>
  - e. Special Requests:
    - i. We prefer our poles to be flashed with brown sheet metal for animal incursion prevention, please factor installation of the flashing into your pricing.
    - ii. All underground fiber installations must include a continuous, tonable tracer wire installed alongside the fiber cable. The tracer wire must form a complete, unbroken circuit with no segmentation.
    - iii. Our fiber will be top cable and may be close to electric infrastructure in some cases. Successful bidder will have on staff persons qualified to work in this space when necessary.
    - iv. Our desired construction start date is July 1 2025

2. Minimum Qualifications: Contractors seeking to submit a Statement of Qualifications must have provided Fiber Installation services for a minimum of three similar projects as defined within Section 1: Scope of Work, within the past 5 years.
3. Statement of Qualifications: HES is seeking to contract with a competent, qualified Contracting firm, registered to practice in the State of Kentucky to implement the above Scope of Work.

Interested firms are required to submit the following for consideration:

A. Contact Information/Firm Type

- Legal name of firm
- Contact Persons including phone number and email address
- Legal business description (Individual, Partnership, Corporation, Joint Venture, etc.)
- Location of Office that will be conducting the work

B. Experience of Firm and Proposed Staff (40 points)

Provide an overview of the firm, to include the following:

- Brief overview of firm with rationale for why firm is well-suited to perform the scope of work
- Names, roles, resumes and other information of key personnel proposed to work on this project
- Provide the proposed crew supervisor's experience with similar type projects
- Provide a copy of firm's current certificate of insurance for professional liability

C. Past Work Performance (40 points)

Provide verifiable examples of a minimum of three (3) similar projects completed in the last five (5) years, including for each:

- Project description and location
- Client name, contact person and contact information
- Estimated project time frame and actual time to completion
- Initial opinion of cost and final construction costs

D. Capacity to Perform (20 points)

- Proposed estimated starting time for project if firm is selected (after a contract is signed)
- Proposed anticipated time schedule to complete Scope of Work tasks as described in Section 1
- Provide staffing size by areas of expertise required for project
- Provide current workload of firm

4. Evaluation Criteria: The proposals received will be evaluated and ranked according to the following criteria:

Criteria	Max Points
Firm's past experience with similar projects and expertise of firm/staff relevant to project	40
Cost of services	40
Capacity to Perform Proposed Services	20
Total	100

The Respondent's qualifications will be evaluated based on these criteria. The most qualified Respondent will be selected, subject to negotiation of fair and reasonable compensation. HES energynet reserves the right to reject any and all submissions.

5. Questions regarding this Request for Proposals should be directed to our website at <https://hop-electric.com/rfp2025-003> and must be submitted by Friday May 23<sup>rd</sup> at 10:00 AM.
6. Deadline for Submission: Please submit a PDF or paper copy of your statement of qualifications. The proposals must be received no later than 1:30 PM on May 27<sup>th</sup>, 2025. Paper copies may be mailed or delivered to: Hopkinsville Electric System, Attn: Timothy Griffey, 1820 E. 9<sup>th</sup> Street, Hopkinsville, KY 42240 and .pdf copies may be sent to: [tgriffey@hop-electric.com](mailto:tgriffey@hop-electric.com).
7. Bid Opening will be held in the Hopkinsville Electric System board room on May 27<sup>th</sup> 2025 at 1:30 PM.

**HES energynet RFP/RFQ Attachment A**

This is an overview of equipment to be used. Equipment will be provided by HES energynet.

**Fiber Cables**

Part Label	Part Number	Brand	Material Count	Material Rate Unit
48ct Backbone	AT-3BE17NT-048-CLGA	OFS	107,099	per foot
12ct Backbone	AT-5BE8T7T-012	OFS	92,637	per foot
96ct Backbone	AT-3BE17NT-096-CLGA	OFS	174,977	per foot
144ct Backbone	AT-3BE17NT-144-CLGA	OFS	2,109	per foot
216ct Backbone	AT-3BE17NT-216-CLGA	OFS	2,711	per foot

**Network Points**

Part Label	Part Number	Brand	Material Count	Material Rate Unit
Handhole	PE14HDH005P3 14x19x12	Pencell	80	per unit
Pedestal	J3Z-024-ZZZ-ZZZ	CLEARFIELD	18	per unit
216ct Cabinet	FDH PON CABINET WITH 4 INCH RISER, FIBER PATCH ONLY, 288 MAXIMUM CAPACITY, LOADED WITH 216 SC/APC DISTRIBUTION PORTS , 1 X 216 FIBER OSP NON-RATED LOOSE TUBE, 100 FEET, 12 OSP FEEDER FIBER PIGTAIL	CLEARFIELD	35	per unit
Vault	CLF-VC7B-CZP	CLEARFIELD	1	per unit
B Splice Enclosure	FOSC450-B6-6-NT-0-TOV	Comscope	296	per unit
B Splice trays	FOSC450-B6-6-NT-0-TOV	Comscope	592	per unit
D Splice Enclosure	FOSC450-D6-6-NT-0-D3V	Comscope	51	per unit
D Splice trays	FOSC450-B6-6-NT-0-TOV	Comscope	204	per unit
NAPs	CH-G6L18S2F1V0G0A00	Channell	1,718	per unit
288ct Cabinet	FDH PON CABINET WITH 4 INCH RISER, FIBER PATCH ONLY, 288 MAXIMUM CAPACITY, LOADED WITH 288 SC/APC DISTRIBUTION PORTS , 1 X 288 FIBER OSP NON-RATED LOOSE TUBE, 100 FEET, 24 OSP FEEDER FIBER PIGTAIL	CLEARFIELD	1	per unit

**Equipment**

Part Label	Part Number	Brand	Material Count	Material Rate Unit
1x32 Splitter	KC1-CAA	CLEARFIELD	194	per unit

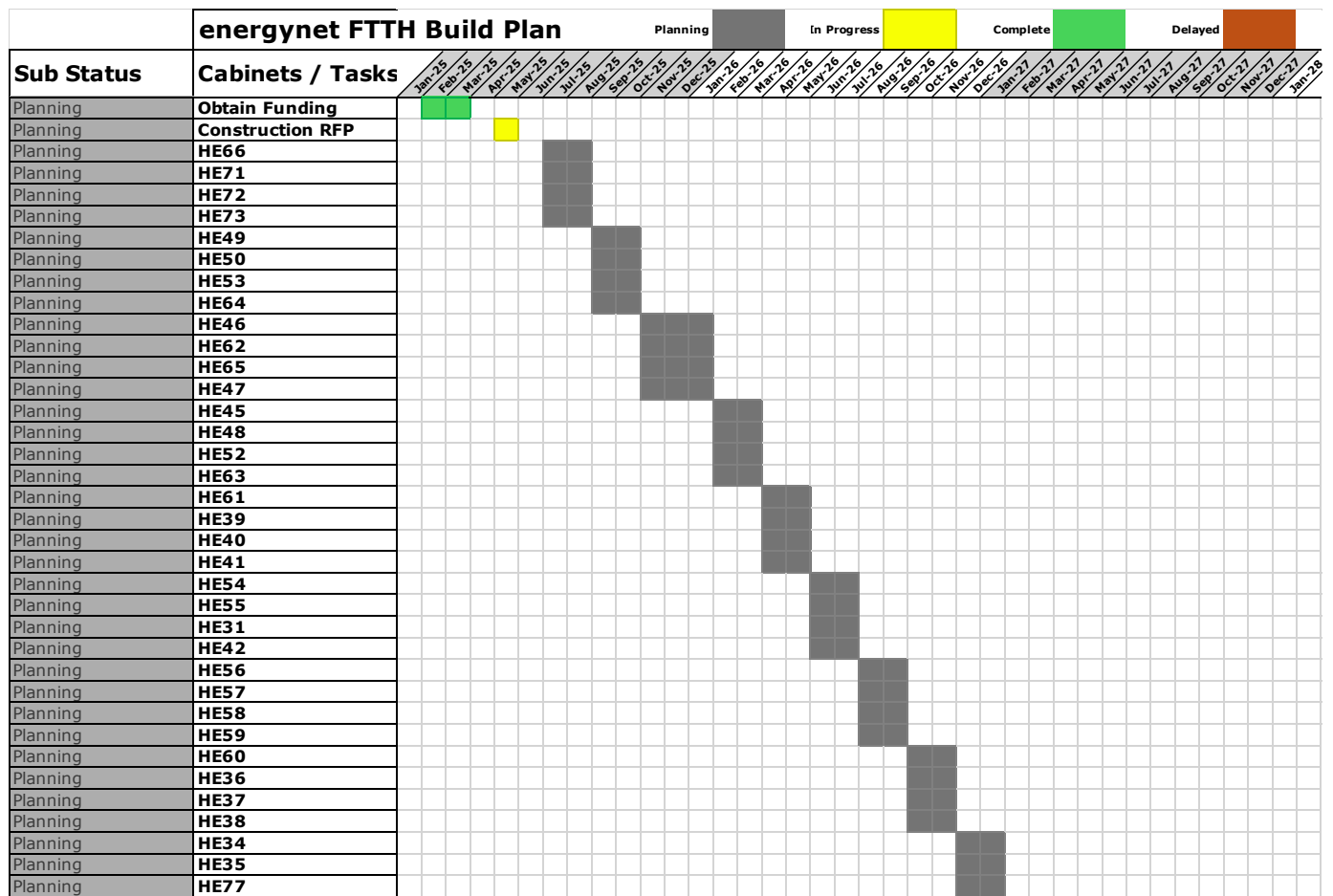
**Ducts**

Part Label	Part Number	Brand	Material Count	Material Rate Unit
Duct	1.25" IPS SDR13.5 HDPE	Dura-Line	13,353	per foot

**Nonnetwork Points**

Part Label	Part Number	Brand	Material Count	Material Rate Unit
Bolt 5/8		MacLean	2,843	per unit
Eye Nut 5/8		MacLean	1,619	per unit
Dead End Assembly	2872007C1E1	PLP FIBERLINE	3,612	per unit
Grip/Tangent	4450102A	PLP FIBERLINE	805	per unit

## Attachment B – Desired Project Timeline



Attachment C – HE30 Example Design Drawing

